

File Cube



<http://www.sagital.net>

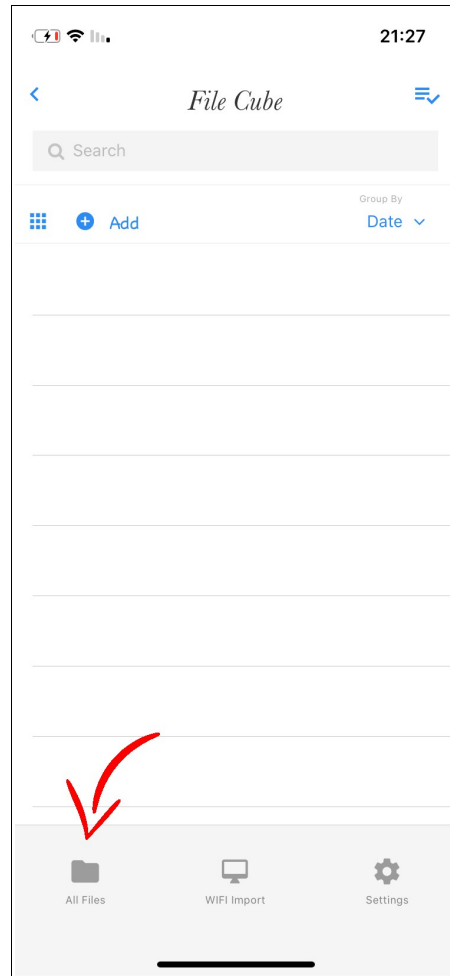
Index

- User Interface
- Sorting
- File Options
- Search Option
- File Transfer
- Settings

User Interface:

In this section I will explain about the User Interface of File Cube.

By opening File Cube we will see the Main Screen like this:



On the bottom we can see 3 Buttons.

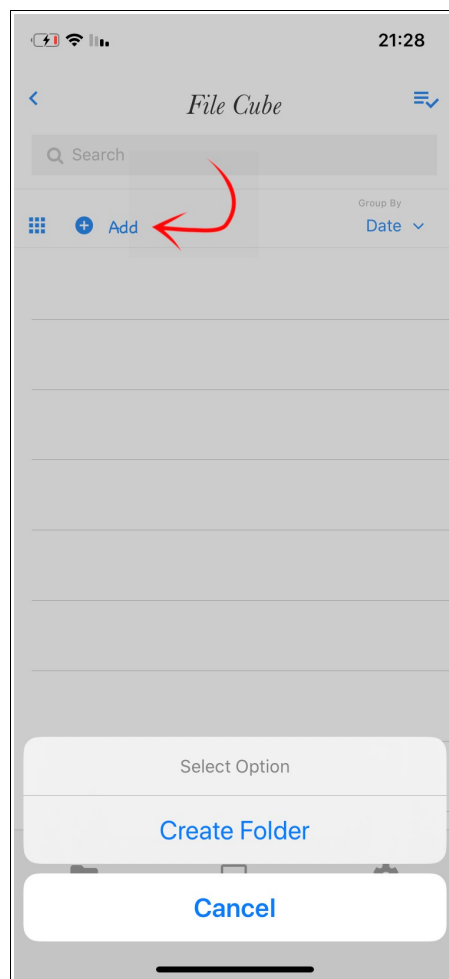
- All Files
- Wifi Import
- Settings

Clicking on each button will open a different screen.

Add a new Folders

The App starts at screen “All Files” where all saved files are listed. In this Screen we can do different actions with each file like delete, share, copy, open, rename and much more.

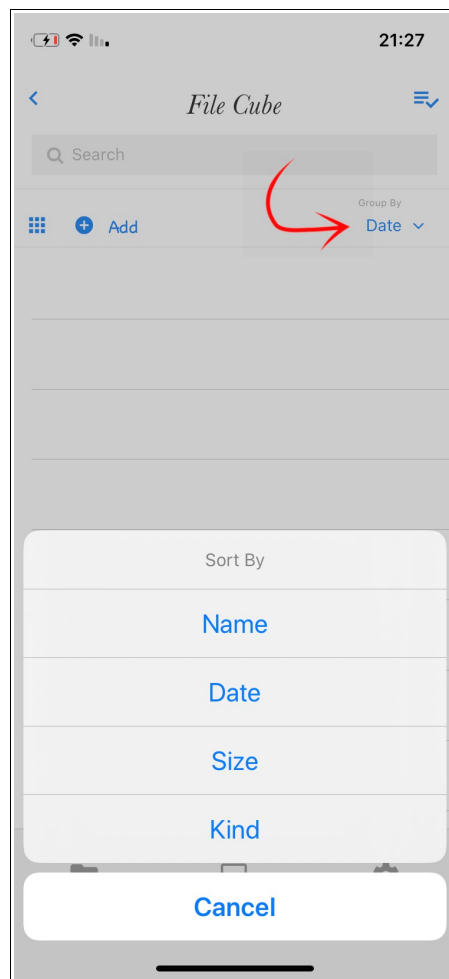
Clicking on the **+ Add** button will allow us to create a new Folder where we can move/copy any files into it.



Sorting

If we want to sort the files we can click on the **Sort By** button and choose between:

- By Name
- By Date
- By Size
- By Kind

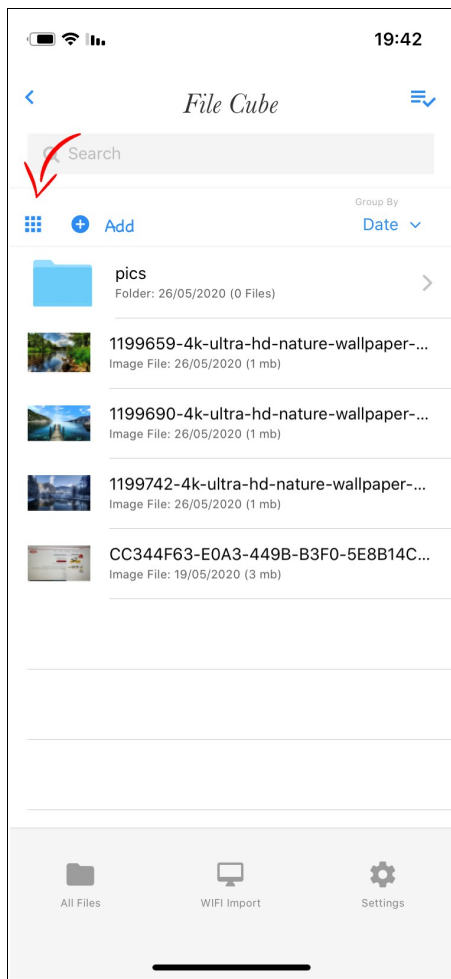


View Options

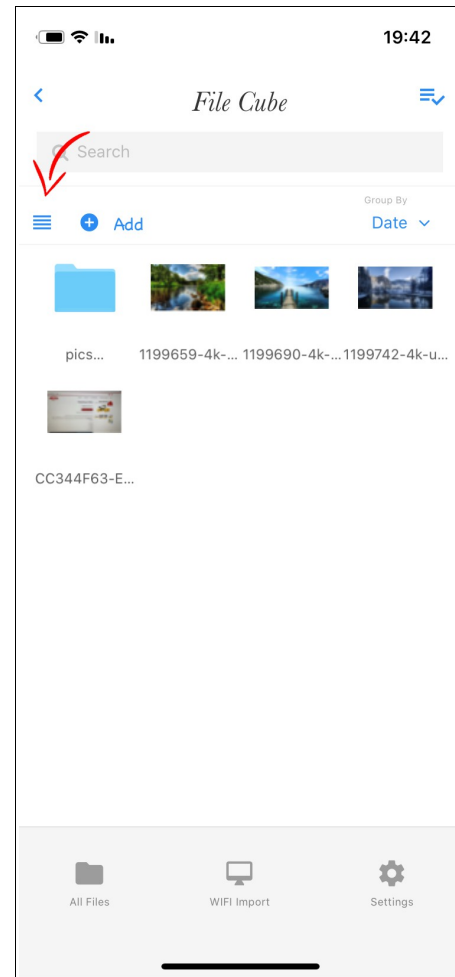
After adding files to File Cube we can choose between 2 different view options:

- Linemode
- Gallerymode

Linemode

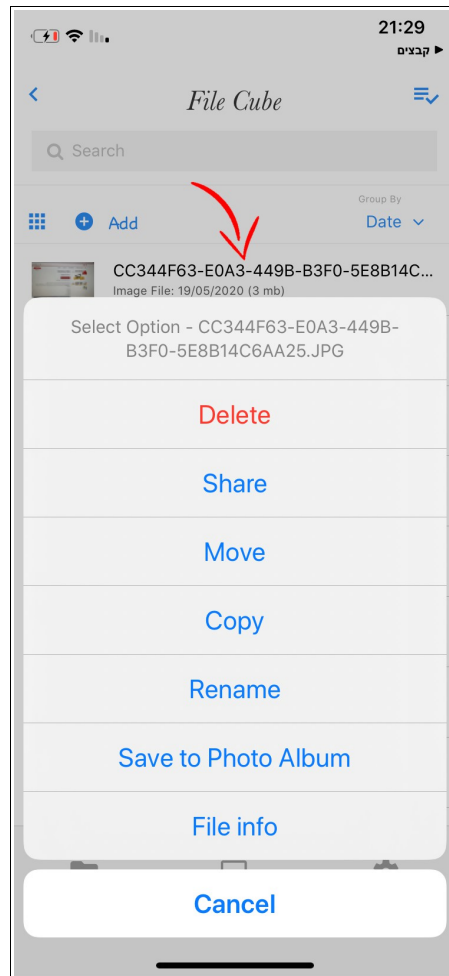


Gallerymode



File Options

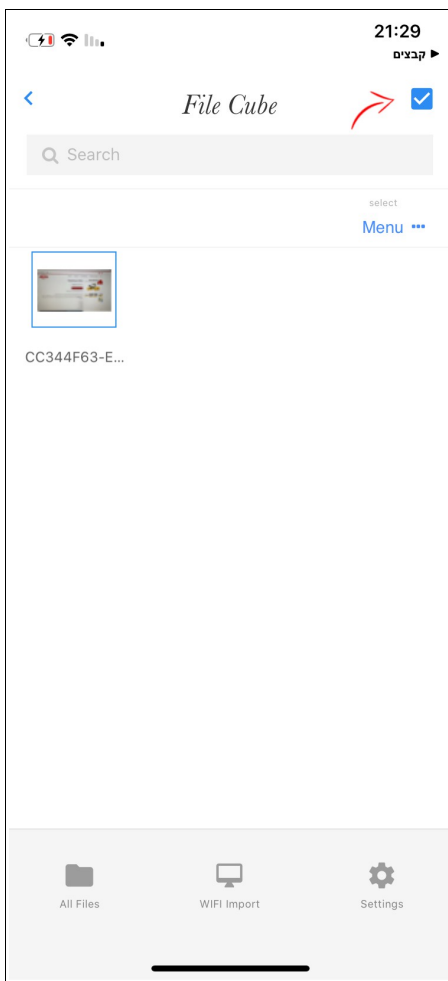
To access the different file options we need to perform a [Long Click] on an item in the list and a menu will popup.



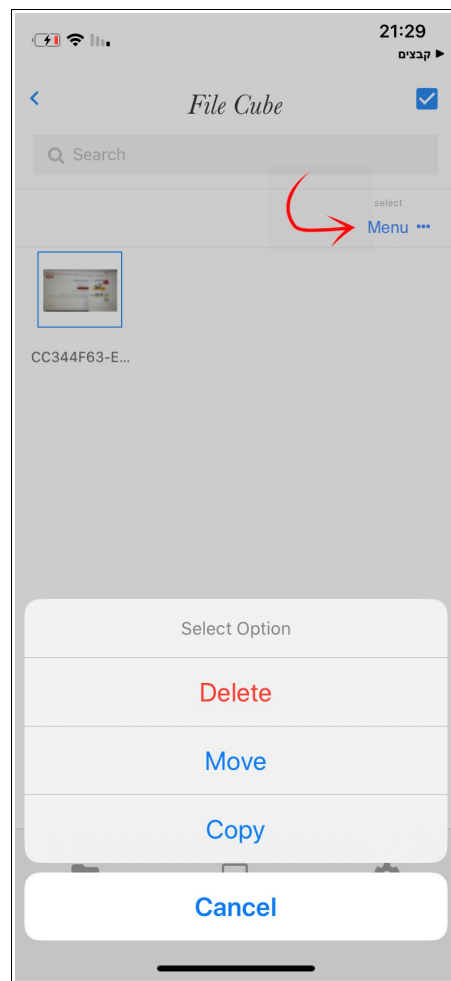
Multiple Selection

We can also select multiple files and perform different action at once like move, copy or delete.

First we enable multi selection

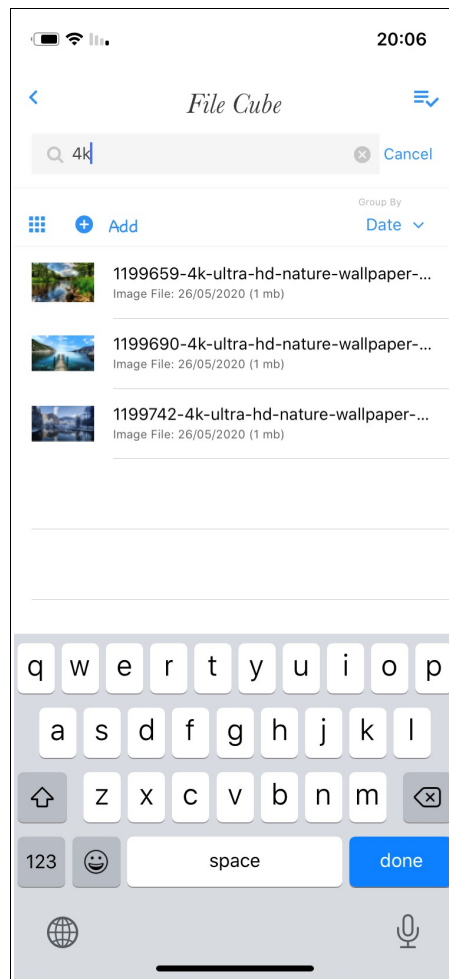


Then we select the items and click on **Menu**



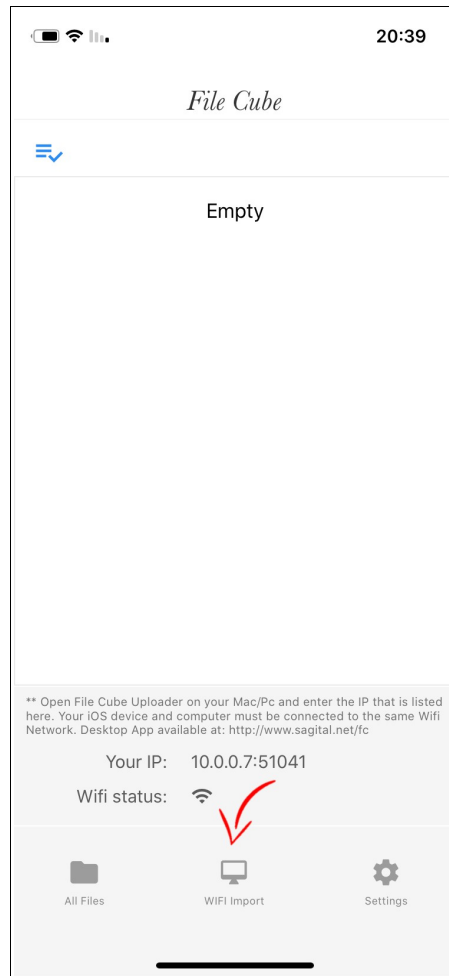
Search Option

If we would like to search a specific file we just need to select the Search Field and enter any text that we would like to search.



File Transfer

Transferring files in File Cube is very simple. First We need to switch to the “Wifi Import” screen.



After opening the “Wifi import” screen we are ready to transfer files via **ANY** Ftp program that is available. I will show you how to setup a connection in 2 different Apps.

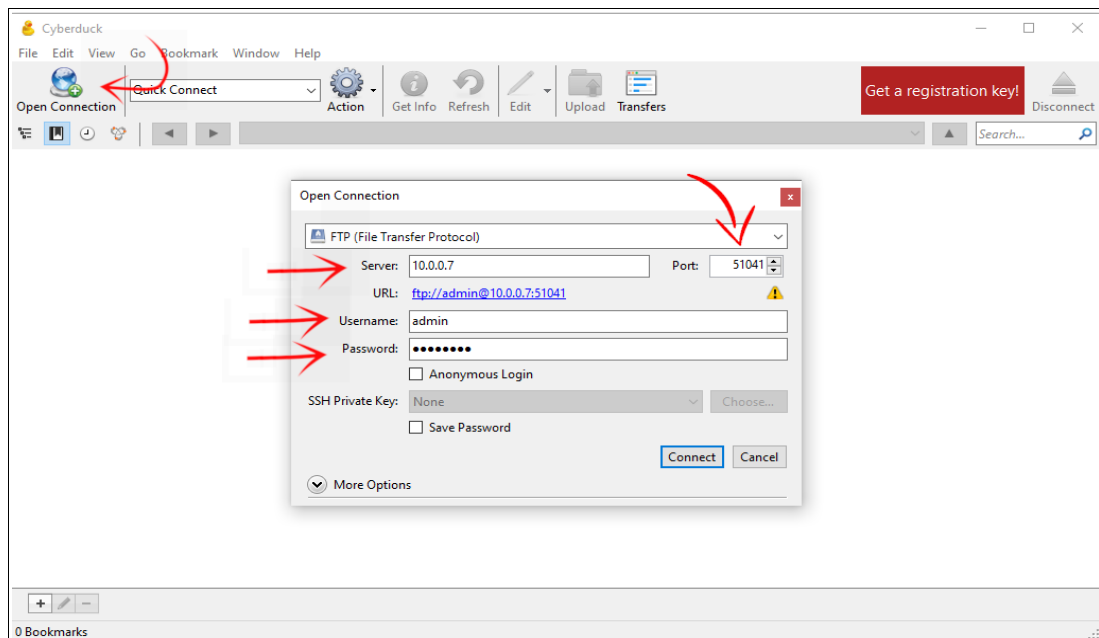
- File Cube Uploader (Our own ftp client App)
- Cyberduck (Freeware)

To start transferring files we need to put 4 parameters in the connection setup.

- Host Name (IP Address)
- Port
- Username (default is “admin”)
- Password (default is “password”)

If we will use **Cyberduck** then we have to set it up like this:

- Click on “Open Connection”
- Choose FTP (File Transfer Protocol)
- Enter the Server (FileCube: “Your IP” in our case it is: 10.0.0.7)
- Enter the Port: 51041
- Enter the Username (default is “admin”) **you can change it in the Settings Screen
- Enter the Password (default is “password”) **you can change it in the Settings Screen
- Now Click “Connect”

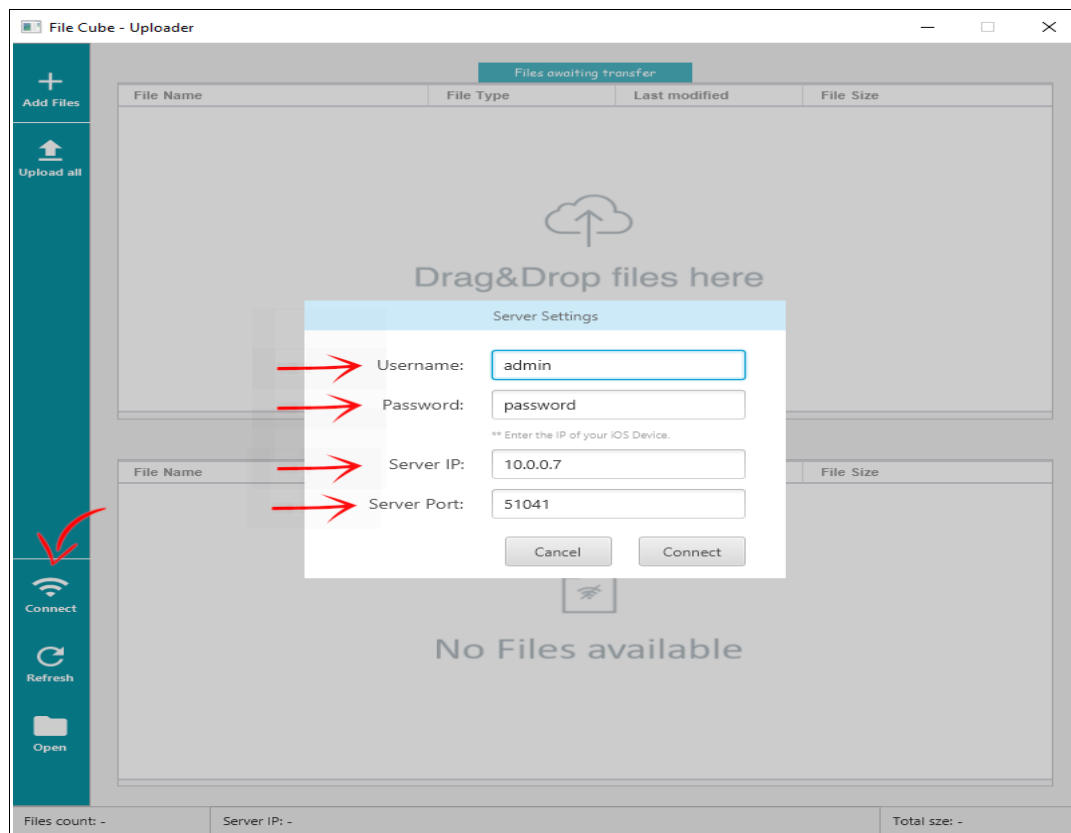


Now you are connected to the iOS Device and can start transfer files or download.
Make sure to click the “Refresh” button.
Just drag and drop files to Cyberduck and they will appear in FileCube.

Now we will do the same using our FTP Client “File Cube Uploader”.
You can download **File Cube Uploader** for free from our site: <http://www.sagital.net/fc>

To start a connection in File Cube Uploader we will do the following steps:

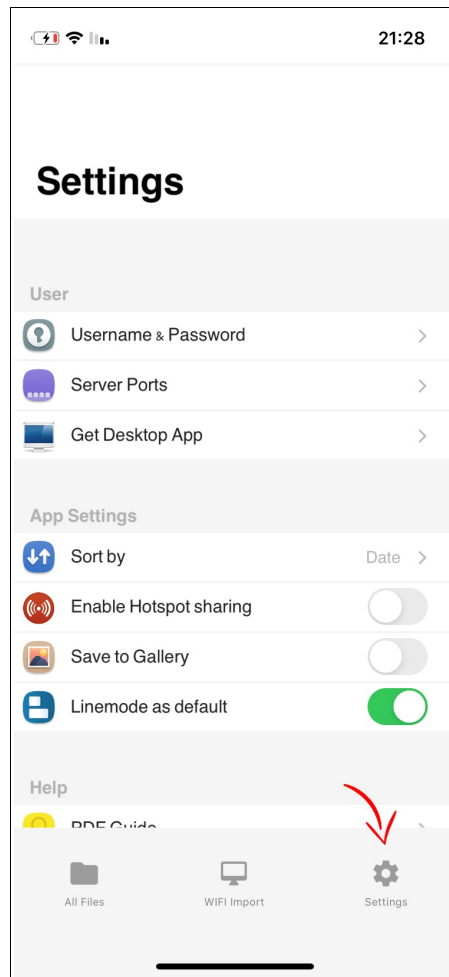
- Click on “Connect”
- Enter the Username (default is “admin”) **you can change it in the Settings Screen
- Enter the Password (default is “password”) **you can change it in the Settings Screen
- Enter the Server IP (FileCube: “Your IP” in our case it is: 10.0.0.7)
- Enter the Server Port: 51041
- Now Click “Connect”



Now you are connected to the iOS Device and can start transfer files or download.
Just drag and drop files to File Cube Uploader and they will appear in FileCube.

Settings

To open the “Settings” screen we need to click on the Settings button.



In the Settings screen we can set several options like the Username, Passwords, Server Ports, Sort by (default), and much more.

For Any question please contact us under: info@sagital.net and we reply as soon as possible.

If you like “File Cube” please consider rating the App in the App Store!